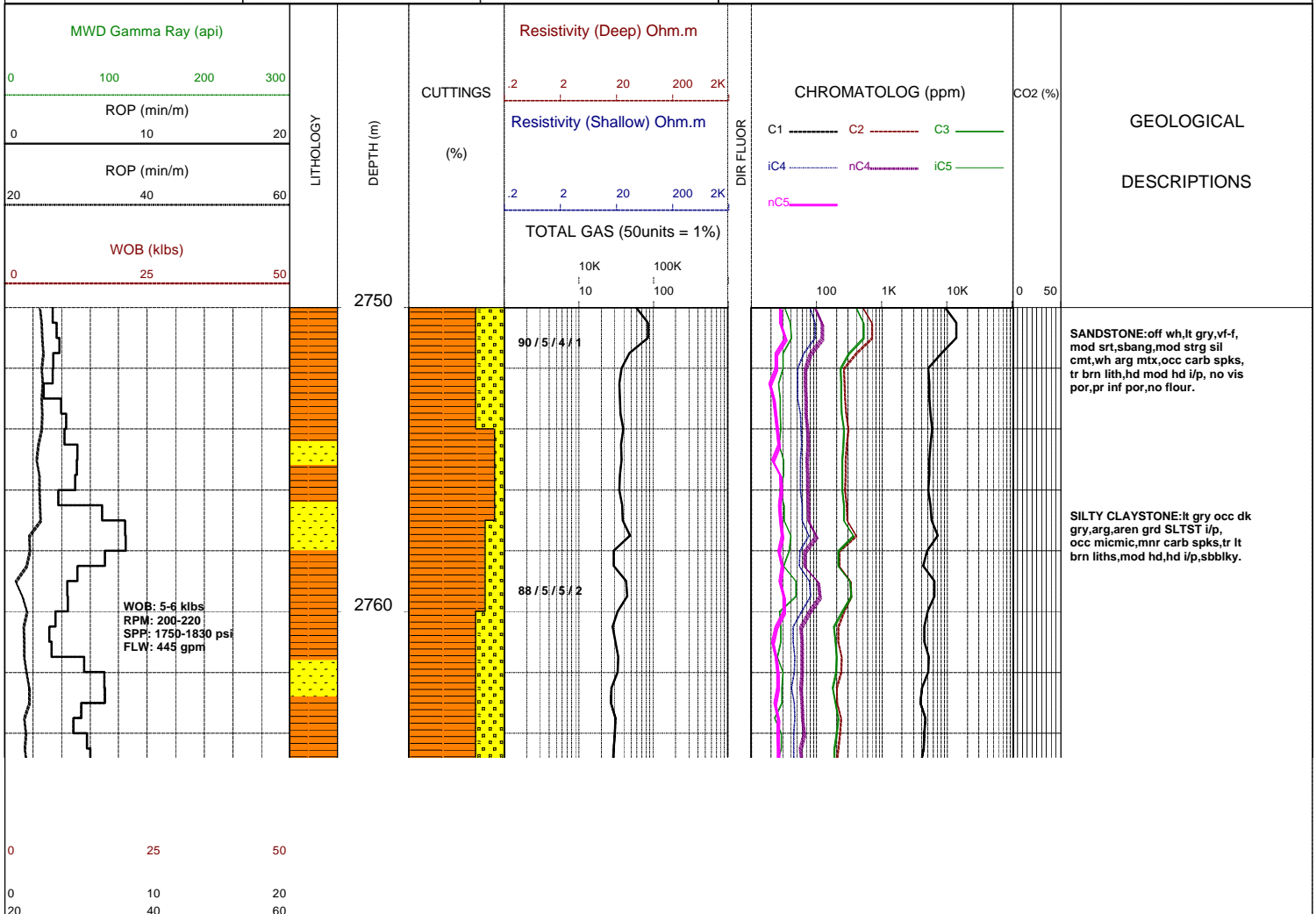
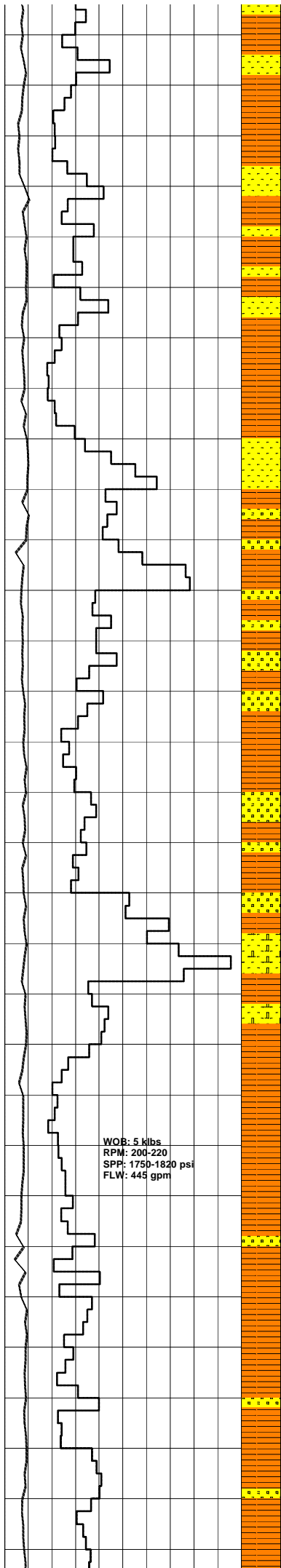


GLENAIRE 1

Field :	Kelly Bushing : PEP 160	Rig : ENSIGN 32	Open Hole:	Cased Hole:	Loggers : J.SUTTON
Block:	Ground Level : STATUS	Spud Date : 08/09/2006	17.5" (12.25") 307m	13.375" (9.625") 303.5m	N.LUIS
State : VICTORIA	GRS80 Ellipsoid MGA94 Zone54 :	TD Date : XX/XX/2006	12.25" (8.5") 1255m	9.625" (7.0") 1252m	J.TRETHEWEY
Country : AUSTRALIA	Lat. : 37°34'47.03S	Total Depth : VVV	8.5" XXXXm		
Scale : 1/ 200	Long. : 140°59'52.25E	Final Status : WWW		RRRR SSSS AAA	

LITHOLOGY 	ACCESSORIES 	DRILLING DATA MUD DATA MW - Mud Weight (lb/gal) FV - Funnel Viscosity (s/qt) PV - Plastic Viscosity (cps) YP - Yield Point (lb/100ftsq) Gel - Gel Strength (10sec) WL - Water Loss (cc/30min) pH - Acidity / Alkalinity Ck - Cake (32nd/inch) O/W/S - Oil / Water / Solids Cl - Chlorides (mg/L) K+ - Potassium (mg/L) Rmf - Res. Mud Filtrate (ohmm)	ABBREVIATIONS BOPD - Barrels of Oil Per Day BWPD - Barrels of Water Per Day CG - Connection Gas CO - Circulate Out COND - Condensate c/c - Crush Cut DST - Drill Stem Test FLOW - Flow Rate (gal/min) GCM - Gas Cut Mud GCW - Gas Cut Water GTS - Gas To Surface INJ - Injection of Mist (bbls/hr) LCM - Lost Circulation Material MMCFD - Million Cubic Feet / Day NGTS - No Gas To Surface NOTS - No Oil To Surface NFTS - No Flow To Surface OCM - Oil Cut Mud OG - Over Gauge OH - Open Hole OTS - Oil To Surface Q - Flow Rate REC - Recovery FLUOR - Fluorescence ROP - Rate Of Penetration RPM - Revolutions Per Minute RTSTM - Rate Too Small To Measure Rw - Resistivity water r/r - Ring Residue SCFM - Standard Cubic Ft/Min (air) SGCM - Slightly Gas Cut Mud SPM - Strokes Per Minute SPP - Stand Pipe Pressure SWC - Side-Wall Core TG - Trip Gas WOB - Weight On Bit
----------------------	------------------------	--	--





2770

88 / 5 / 4 / 2 / 1

2780

88 / 5 / 5 / 2 / Tr

88 / 5 / 5 / 2 / Tr

2790

88 / 5 / 5 / 2 / Tr

2800



2810

89 / 5 / 4 / 2 / Tr

2820

89 / 5 / 4 / 2 / Tr

WOB: 5 klbs
RPM: 200-220
SPP: 175p-1820 psi
FLW: 445 gpm

NO CO2
NO H2S

SANDSTONE:wh,occ off wh,lt gry
i/p,vf-f,mod srt,sbang,occ sbrnd,
mod strg sil cmt,wk calc cmt, off
wh arg mtx,lt gry arg mtx i/p,
tr carb spks,occ lt brn liths,
tr grn liths,mod hd,no vis por,
pr inf por,no flour.

SILTY CLAYSTONE:dk gry,pl gry/gm
i/p,arg,com micmic,mnr grn liths,
mnr carb spks,mnr brn liths,mod
hd,sbbiky.

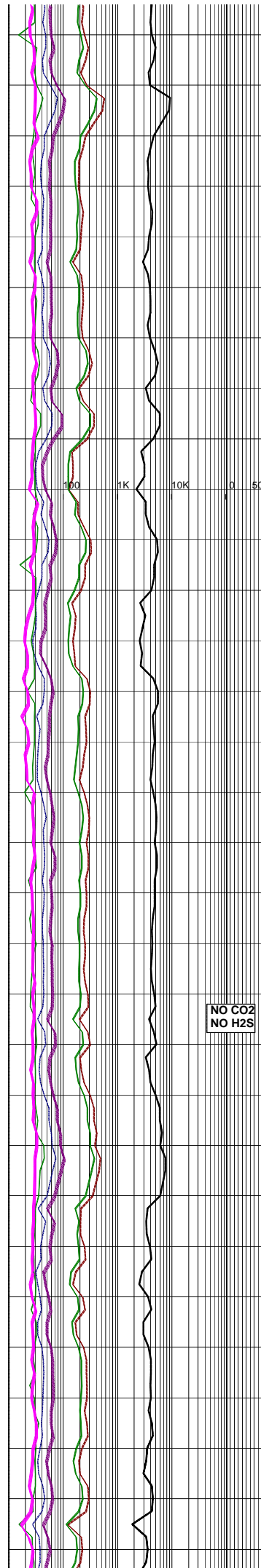
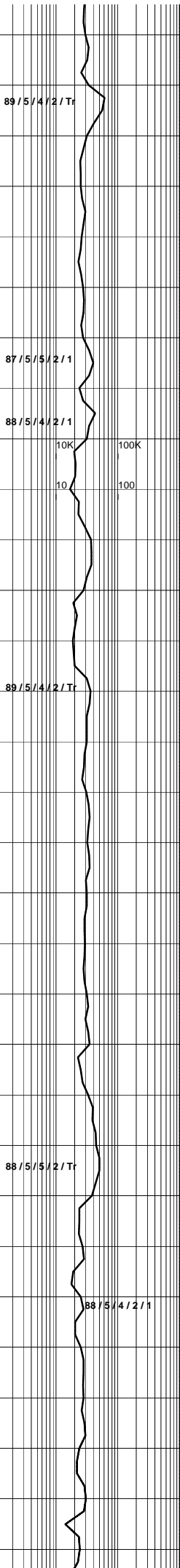
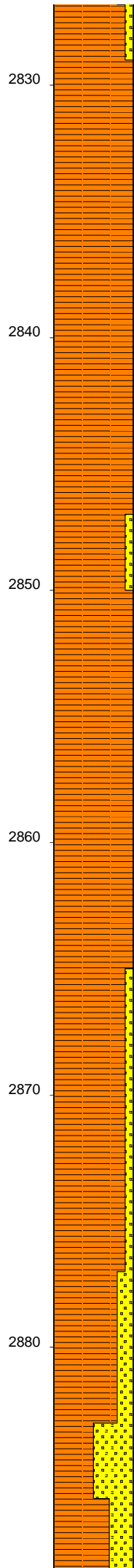
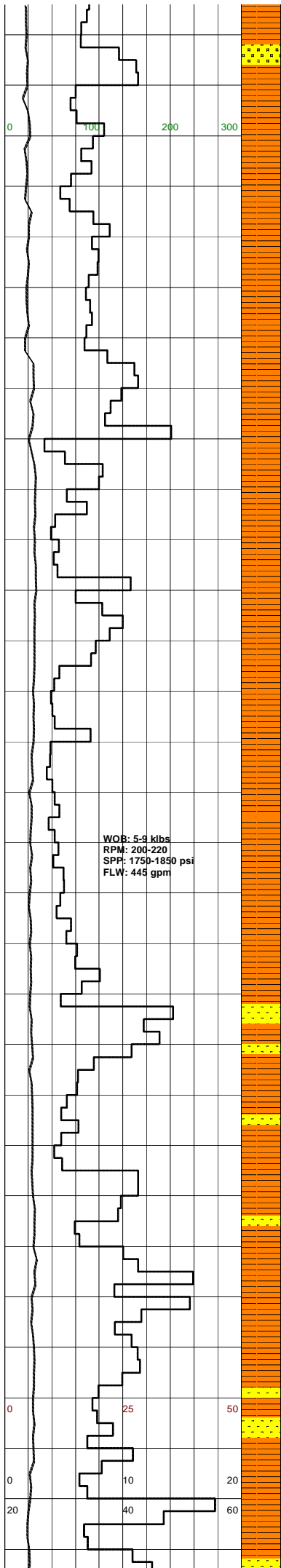
SANDSTONE:wh,occ off wh,lt gry
i/p,vf-f,mod srt,sbang,occ sbrnd,
mod strg sil cmt,wk calc cmt, off
wh arg mtx,lt gry arg mtx i/p,
tr carb spks,occ lt brn liths,
tr grn liths,mod hd,no vis por,
pr inf por,no flour.

CALCAREOUS SANDSTONE:wh,milky,
off wh,vf-f,occ med,pr-mod srt,
sbang-sbrnd,strg calc cmt,occ
arg mtx,comm feild,abdt blk,brn,
gry,grn liths,mod-occ hd,pr vis
por,no flour.

SURVEY @ 2806m: 5.25° 70°T

SILTY CLAYSTONE:lt-med gry,occ
dk gry,grn/gry,lt-dk brn,arg,
aren i/p,grd to SLTST,micmic,
tr carb spks,tr liths,mod-occ
hd,sbbiky.

NO CO2
NO H2S



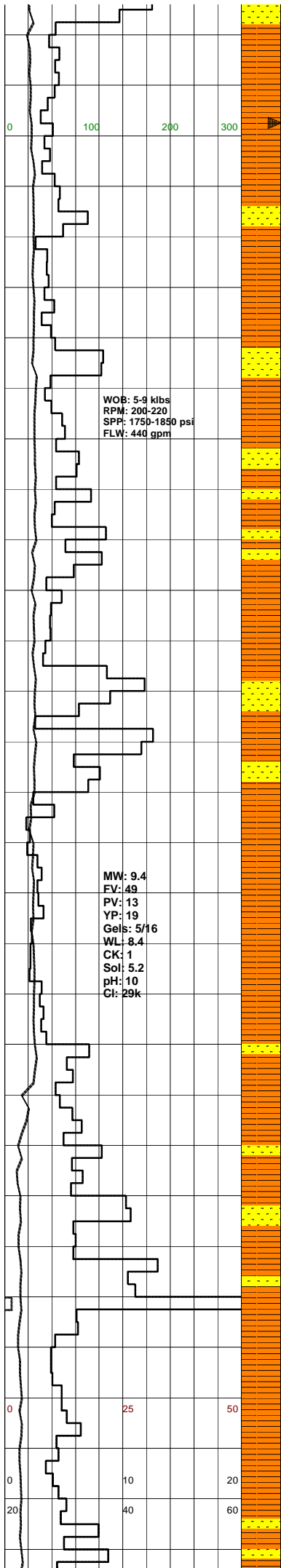
SILTY CLAYSTONE:lt-med gry,occ dk gry,grn/gry,lt-dk brn,arg, aren i/p,grd to SLTST,micmic, tr carb spks,tr liths,mod-occ hd,sbblky.

SILTY CLAYSTONE:lt-med gry,med brn/gry,tr lt brn,aren i/p,occ grd to SLTST,com micmic,occ off wh liths, mod hd,sbblky.

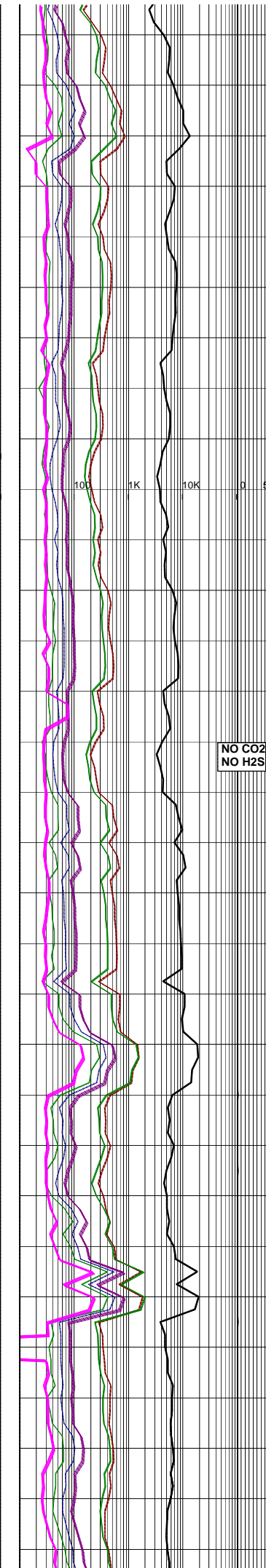
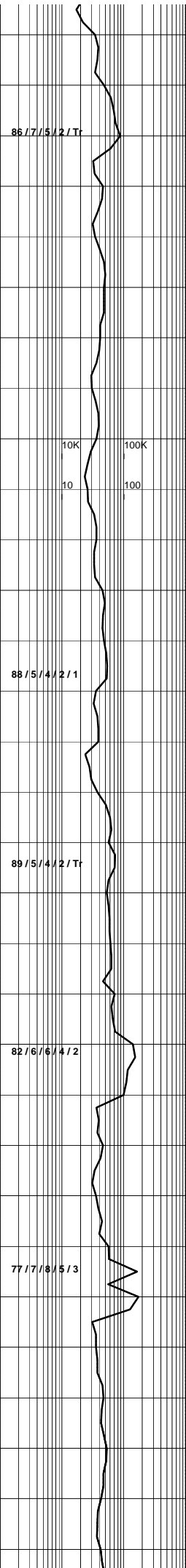
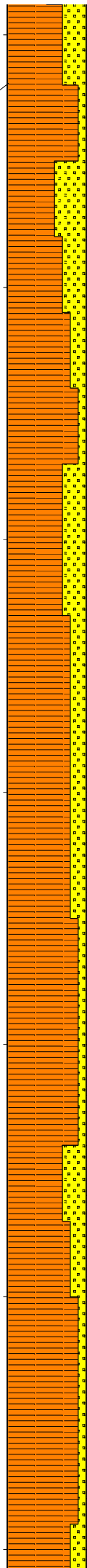
SILTY CLAYSTONE:lt-med gry,med gry/brn,aren,grd to SLTST i/p,occ carb spks & off wh liths,tr micmic, frm-mod hd,hd i/p,sbblky-blky.

SANDSTONE:pl gry,lt brn/gry,off wh,vf-i,mod w/ srt,sbrnd,com mod strg sil cmt,mnr pl gry arg mtx,tr lt brn liths & carb spks,v pr vis por, no fluor.

SILTY CLAYSTONE:md gry,lt gry, occ gry/brn,arg,com aren grd SLTST, com carb spks,abdt micmic,occ brn liths,mod hd,sbblky.



2890
2900
2910
2920
2930
2940
2950



SANDSTONE:off wh,occ lt gry,f, mod srt,occ pr-mod srt,sbang,sbrnd, lt gry mod strg sil cmt,com carb spks,abdt brn liths,tr grn liths, mod hd,fr i/p,no vis por, pr inf por.

SURVEY @ 2893m: 4.75° 3171

SANDSTONE:off wh,occ lt gry,vf-f,med i/p,mod srt,sbang-sbrnd, mod strg sil cmt,occ wk calc cmt,lt gry arg mtx,com carb spks, abdt brn liths,tr grn liths,mod hd,no vis por,pr inf por,no flour.

SILTY CLAYSTONE:lt-med gry, dk gry i/p,arg,aren grd SLTST i/p, tr-com lt brn liths,tr-com carb spks, com micmic, mod hd, sbbiky.

NO CO2
NO H2S

SILTY CLAYSTONE:lt-med gry, dk gry i/p,arg,aren grd SLTST i/p, tr-com lt brn liths,tr-com carb spks,com micmic,mod hd,sbbiky.

